

Business Energy Services Program Overview





John Greco

Sr. Principal Engineer , Business Energy Services

John Greco is currently the Sr Western regional Principal Engineer for the NV Energy BES program. During his 35-plus years' experience he has held various positions of responsibility such as: Operations Director, Principal Engineer, Senior Energy Engineer, Project Manager, and National Technical Services Account Manager for critical data centers.

He has certifications in the following areas: Project Management, C.E.M, DOE-Certified Data Center Energy Specialist (DCEP), C.M.V.P, and Certified Trainer for the Building Sustainable Energy Technician (BEST) Certification Program., Qualified Electrical safety. He has diversified technical experience, specializing in energy analysis and program implementation.

Business Energy Services

What We Offer

- Application Support
- Technical Services
- Free Virtual Education & Training
- Instant Discounts
- Retrofit Project Incentives
- New Construction Incentives

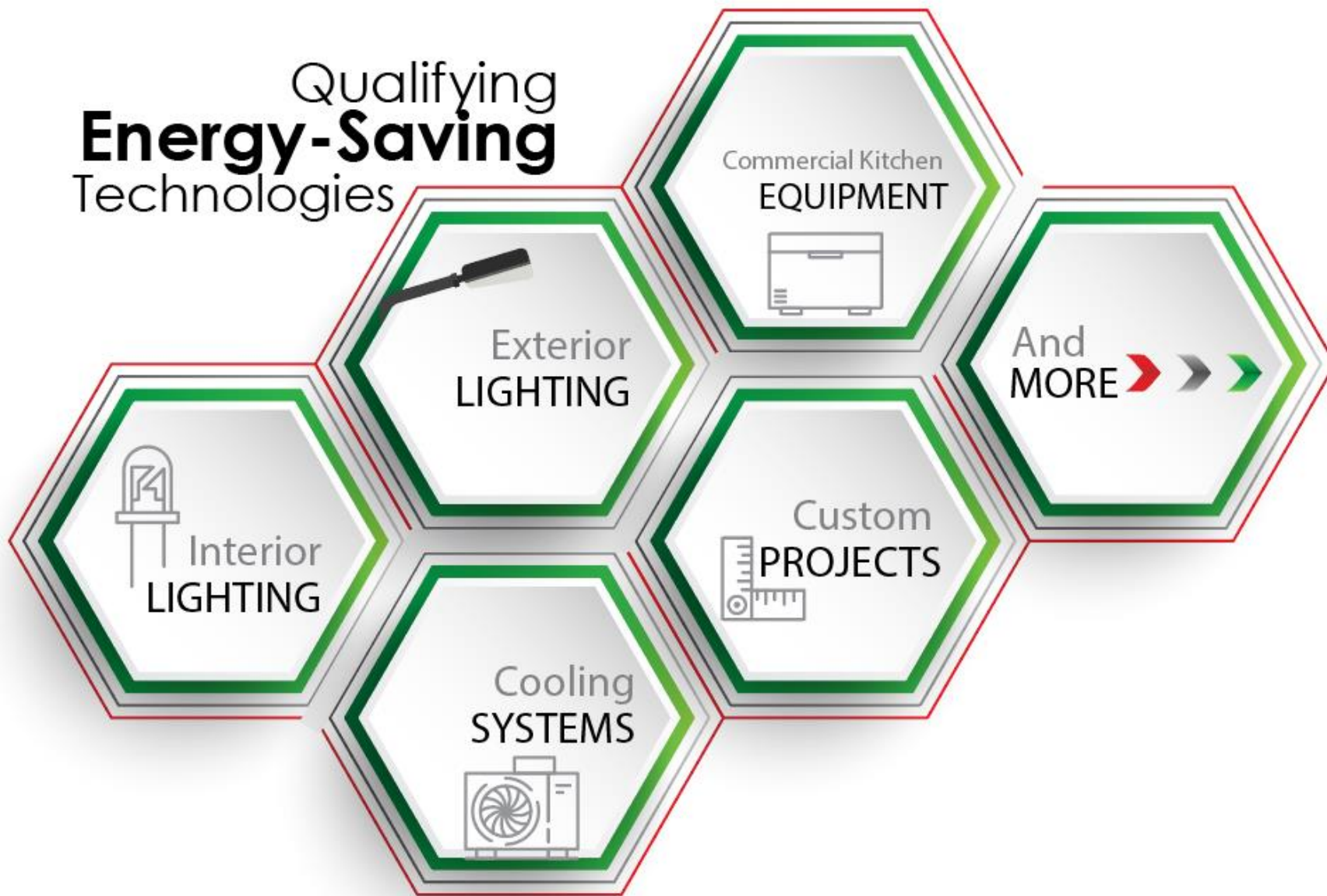


Customer Benefits

- Reduced Energy Expenses
- Reduced Carbon Footprint
- Annual Cash Savings
- Improved Comfort

Talk with a Business Energy Advisor 1-800-342-6335

Qualifying **Energy-Saving** Technologies



Instant Discounts

No application Needed

Eligible Products

Lighting	Incentive/unit
T8 4' Linear LED*	\$4
T8 2' U-Bend LED*	\$4
1'x4' LED Illuminated Panel & Troffers Containing LED Strip Lights	\$10
2'x2' LED Illuminated Panel & Troffers Containing LED Strip Lights	\$10
2'x4' LED Illuminated Panel & Troffers Containing LED Strip Lights	\$10

Retrofit Incentives



Prescriptive Incentives

- Lighting
- Cooling & miscellaneous
- Commercial kitchen & refrigeration

Custom Incentives

- Any measure that can verifiably reduce energy consumption
- Measures that qualify for prescriptive incentives are NOT eligible for custom incentives

Applying for Incentives

Retrofit and New Construction

START A PROJECT

Connect with Energy Advisor early in project

Review Incentive Requirement Sheets

Don't forget pre-photos

Reserve your funds

STAY ON TARGET

Keep us posted on project progress

Let us know of changes to timelines

FINALIZE APPLICATION

Submit all necessary documentation

Don't forget post-photos

Potential final inspection

CAPTURE SAVINGS



Talk with a Business Energy Advisor 1-800-342-6335

Business Energy Services

2023 Southern Retrofit Incentive Summary

More Ways
to Save

Retrofit - Interior Lighting			
Measure	Size/Type	Unit	Incentive
Interior Lighting Lamp/Fixture	Interior	Watt Reduced	\$0.25
Interior LED Lamp, Hotel Guestroom	Interior	Watt Reduced	\$0.10
Delamping T8 Lamps	4-foot lamp	Lamp	\$3.00
LED Exit Sign		Sign	\$15.00
LED Refrigerated Case Lighting		Lamp	\$25.00
LED Channel Sign	≤ 2 Feet	Letter	\$10.00
LED Channel Sign	> 2 Feet	Letter	\$25.00
Occ. Sensor on Refrigerated Case	Enclosed	Door	\$12.00
Occ. Sensor on Refrigerated Case	Open	LF of Case	\$4.00
Occupancy Sensors	Wall Box	Sensor	\$12.00
Occupancy Sensors	Ceiling Mount	Sensor	\$30.00
Occupancy Sensors	HB T5/T8 Sensor	Sensor	\$20.00
Occupancy Sensors	HB LED Sensor	Sensor	\$14.00
Daylighting Controls		Watt Controlled	\$0.10
Bi-Level Stairwell/Hall/Garage LED fixtures with Sensors		Watt Controlled	\$0.40
Retrofit - Exterior and Garage Lighting			
Exterior LED Retrofit Dusk-to-Dawn	Dusk-to-Dawn Operation	Watt Reduced	\$0.20
Exterior LED Retrofit 24/7	24/7 Operation	Watt Reduced	\$0.25
LED Channel Sign	≤ 2 Feet	Letter	\$10.00
LED Channel Sign	> 2 Feet	Letter	\$25.00

Please note that 4' T8 LED lamps and 1'x4', 2'x2', & 2'x4' LED TROFFERS, Illuminated Panels are no longer eligible for incentives through this program. Please see Business Energy Services Instant Discounts Program for incentives on these lamps/fixtures at www.nvenergy.com/bes for details.

Please refer to 2023 Business Energy Services Retrofit Specifications document for complete specifications

¹Incentive varies by transformer size, see application

²Incentive varies by UPS size and input dependency characteristics, see application.



Retrofit - Commercial Kitchen		
Measure	Unit	Incentive
HE Fryer	Vat	\$200.00
Large Vat Fryer	Vat	\$200.00
HE Griddle	Griddle	\$300.00
Convection Oven	Oven	\$350.00
Combination "Oven"	Oven	\$1,000.00
Steam Cooker	Steamer	\$750.00
HE Holding Cabinets, Full Size	Cabinet	\$300.00
HE Holding Cabinets, 3/4 Size	Cabinet	\$250.00
HE Holding Cabinets, 1/2 Size	Cabinet	\$200.00
Ventilation Control - Retrofit	HP	\$350.00
Ventilation Control - New Hood	HP	\$300.00
Anti-Sweat Heater Controls	Door	\$40.00
EC Motors: Walk-in Boxes	Motor	\$40.00
EC Motors: Refrigerated Cases	Motor	\$30.00
Evaporator Fan Controller	Controller	\$35.00
ENERGY STAR® Tier II Vending Machine Refurbishment Kit	Kit	\$75.00
Vending Machine Controls	Controller	\$90.00
Snack Machine Controls	Controller	\$15.00
Floating Head Pressure Controls	HP	\$35.00
Reach-In Cooler Controls	Controller	\$30.00
Ice Machine ES/CEE I <300	Machine	\$50.00
Ice Machine ES/CEE I 300-500	Machine	\$75.00
Ice Machine ES/CEE I 500-1000	Machine	\$125.00
Ice Machine ES/CEE I 1000-1500	Machine	\$200.00
Ice Machine ES/CEE I >1500	Machine	\$250.00
Ice Machine ES/CEE II <300	Machine	\$100.00
Ice Machine ES/CEE II 300-500	Machine	\$150.00
Ice Machine ES/CEE II 500-1000	Machine	\$250.00
Ice Machine ES/CEE II 1000-1500	Machine	\$400.00
Ice Machine ES/CEE II >1500	Machine	\$500.00
Refrigerator SD ES < 15 cf	Refrigerator	\$50.00
Refrigerator SD ES 15 ≤ V < 30 cf	Refrigerator	\$75.00
Refrigerator SD ES 30 ≤ V < 50 cf	Refrigerator	\$90.00
Refrigerator SD ES ≥ 50 cf	Refrigerator	\$125.00
Freezer SD ES < 15 cf	Freezer	\$60.00
Freezer SD ES 15 ≤ V < 30 cf	Freezer	\$75.00
Freezer SD ES 30 ≤ V < 50 cf	Freezer	\$80.00
Freezer SD ES ≥ 50 cf	Freezer	\$200.00
Refrigerator GD ES < 15 cf	Refrigerator	\$50.00
Refrigerator GD ES 15 ≤ V < 30 cf	Refrigerator	\$75.00
Refrigerator GD ES 30 ≤ V < 50 cf	Refrigerator	\$90.00
Refrigerator GD ES ≥ 50 cf	Refrigerator	\$125.00
Freezer GD ES < 15 cf	Freezer	\$60.00
Freezer GD ES 15 ≤ V < 30 cf	Freezer	\$75.00
Freezer GD ES 30 ≤ V < 50 cf	Freezer	\$80.00
Freezer GD ES ≥ 50 cf	Freezer	\$200.00

Retrofit - Transformer and UPS		
Measure	Unit	Incentive
Single & Three Phase High Eff. Transformer	Per Unit	Varies
Single & Three Phase High Eff. Transformer - incremental	Per 0.01% Above Qual.	Varies
High Eff. UPS - Single & Multi-Normal	Output kW	Varies
Retrofit - Miscellaneous		
Escalator Motor Controllers (EMC)	HP	\$20.00
VSD Pool Pump & Scheduling Control	HP	\$150.00
VSD Air Compressor Replacement ≤ 50hp	HP	\$45.00
Compressed Air Engineered Nozzles	Nozzle	\$10.00
High Efficiency Battery Chargers	Charger	\$225.00
Demand Control Ventilation - Parking Garage	HP	\$90.00
Demand Control Ventilation - Interior Spaces	Per 1,000 sq ft	\$50 per 1,000 sq ft
Irrigation Nozzles	Nozzle	\$3.00
Irrigation Sprinklers	Sprinkler	\$2.50
Irrigation Regulators	Regulator	\$3.50
Irrigation Gaskets	Gasket	\$2.00
Retrofit - Cooling		
Air-Cooled Units:		
<65 kBtuh, Qual SEER	Ton	\$12.00
<65 kBtuh, 1 Additional SEER	Ton	\$8.00
(≥65 & <135 kBtuh), Qual EER	Ton	\$12.00
(≥65 & <135 kBtuh), 1 Additional EER	Ton	\$10.00
(≥135 & <240 kBtuh), Qual EER	Ton	\$18.00
(≥135 & <240 kBtuh), 1 Additional EER	Ton	\$10.00
(≥240 kBtuh), Qual IEER	Ton	\$18.00
(≥240 kBtuh), 1 Additional IEER	Ton	\$10.00
Water-Cooled Units, Qual EER	Ton	\$25.00
Water-Cooled Units, 1 Additional EER	Ton	\$10.00
PTAC/PTHP, Qual EER	Ton	\$50.00
PTAC/PTHP, 1 Additional EER	Ton	\$20.00
Programmable Thermostat	Each	\$25.00
Window Film	Sq. Foot	\$0.70
VSD on HVAC Fans and Pumps	HP	\$50.00
Air Side Economizers	Ton	\$25.00
Retrofit - Custom		
	Annual Energy Savings (kWh)	
Custom Incentive	\$0.05 /kWh	
Retro-Commissioning	\$0.05 /kWh	

LEARN MORE

CALL | 800.342.6335
 EMAIL | bes@nvenergy.com
 WEB | www.nvenergy.com/bes

Early Involvement Bonus

Earn an extra 20% incentive bonus on retrofit projects

North

Applied to first **20M** kWh

South

Applied to first **50M** kWh

Bonus is first come, first served, applied to retrofit projects submitted for NV Energy business customers. Small business, non-profit, instant discount and new construction projects do not qualify. All applications are subject to standard project incentive cap and tier rules, which will be applied before the early involvement bonus. Projects must be completed by November 15, 2023 with final documentation submitted.



Retrofit Incentives

- Administered on first-come, first-served basis
- Incentives cannot exceed 50% of project costs
 - exception; retro-commissioning projects
- Retrofit incentive limits will be tiered **PER CUSTOMER (per Tax ID #)** per calendar year as follows:

How Does Tiering Work?

Tier	Breakdown	%	Incentive Pay
Tier 1	\$100,000	100%	\$100,000.00
Tier 2	\$400,000	50%	\$200,000.00
Tier 3	\$6,147	20%	\$1,229.10
Tier 4	\$0	10%	\$0.00
Totals	\$506,147		\$301,229.40

Let's Talk Project Costs

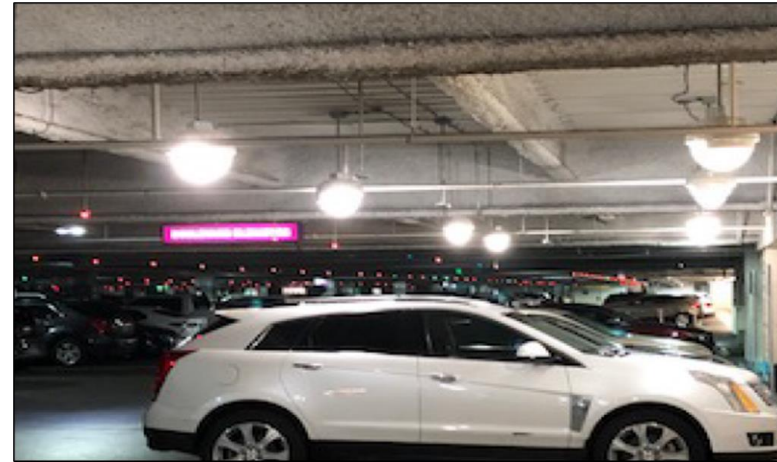
- Project cost includes:
 - Material, labor, burden/overhead, taxes, delivery fees and rental costs
 - Internal labor can be included up to 25% of the total material cost dependent upon the complexity of the project
- Acceptable documentation:
 - **Itemized** invoices, paid purchase orders, schedule of values, AIA format payment requests and signed contracts

Project Example – Retrofit

Prescriptive Lighting

- Customer retrofitted parking garage lighting to LED.
- Verified:
 - Specification sheets comply with program requirements
 - Proposed and baseline Wattages
 - Information on invoices matched project details
 - Incentive amount was less than 50% of the total project cost

- Project Cost: \$28,616.33
- **Incentive Amount: \$9,717.07**
- Annual Energy Savings: 347,500 kWh
- Simple Payback: 0.68 Years

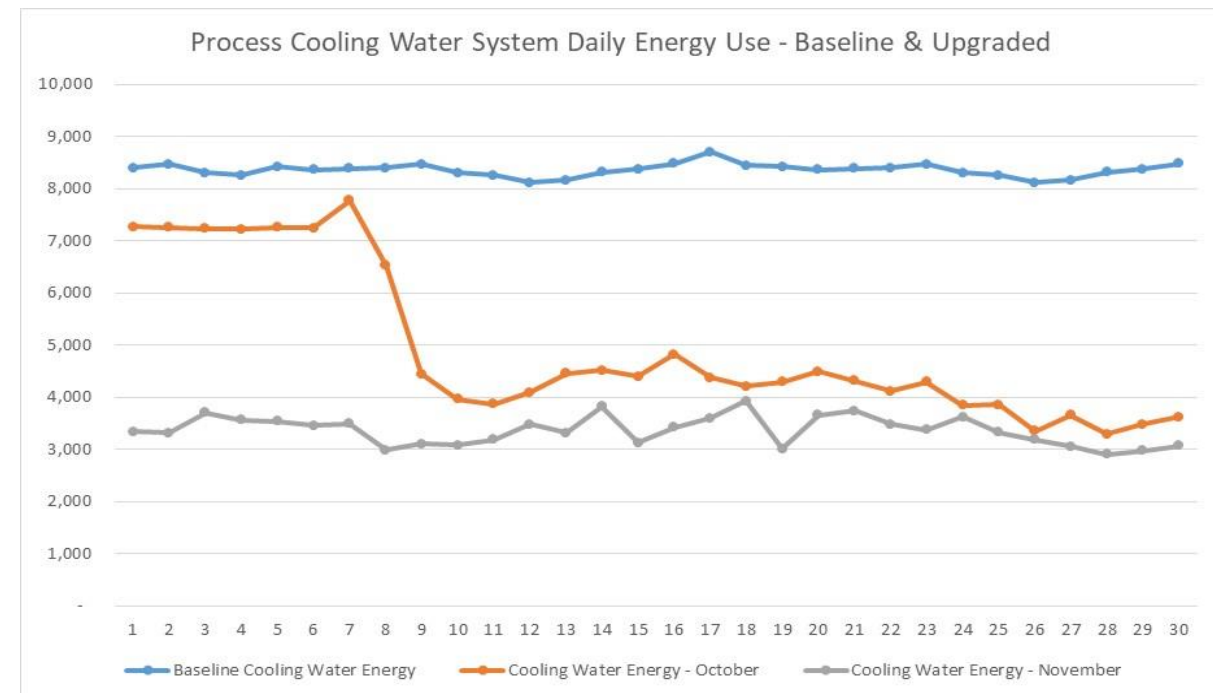
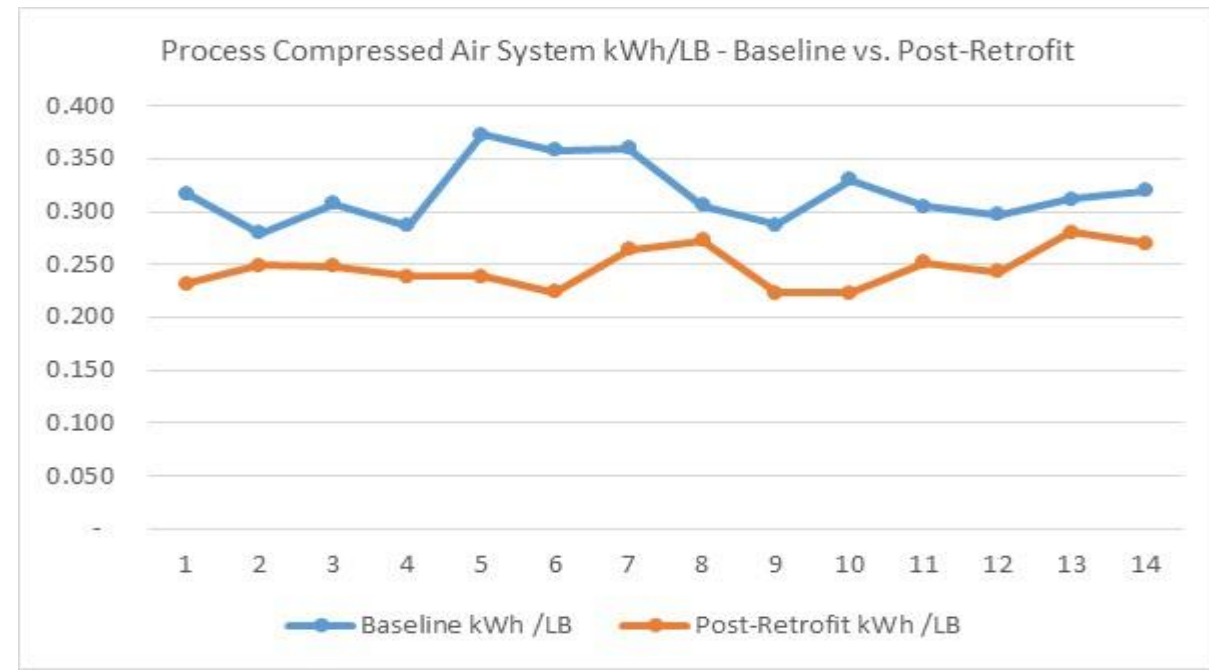


Project Example – Retrofit

Compressed Air & Cooling Upgrade

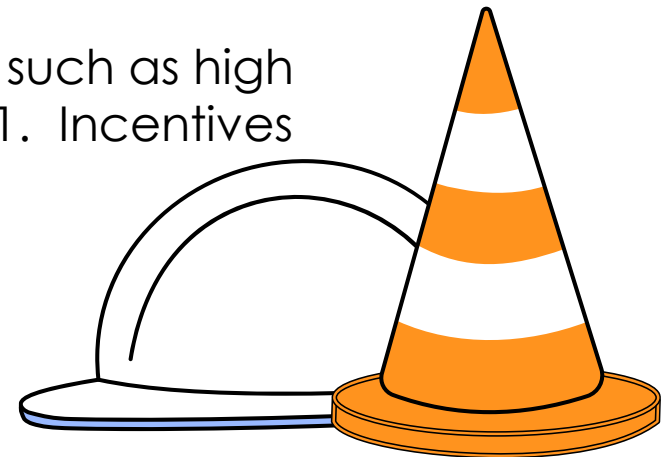
- Reviewed contractor's proposed plans and savings estimate.
- Collaborated on the pre & post data collection requirements and project timeline.
- Annual kWh Savings Analysis, and trend data files submitted
- Requested Historical Production LBS data
- Confirmed energy savings using the collected data
- Prepared a Final Report for the project.

- Project Cost: \$430,676.00
- **Incentive: \$154,278.58**
- Energy Savings: 4,171,143 kWh/year
- Simple Payback: 9 months



New Construction Incentives

- The intent of the offering is to encourage energy efficiency in newly constructed, major renovated areas, tenant improvement spaces, or buildings from the design stage through construction
- The goal is to be at least 5% better than IECC 2018 code standards
- Prescriptive incentives, such as Lighting Power Density, and Custom/Performance Based incentives are available.
- Performance Based requires a qualifying individual item or a system, such as high efficiency chiller, comparison with IECC 2018 and current ASHRAE 90.1. Incentives are \$0.05 per kWh.



Business Energy Services

2023 Southern New Construction Incentive Summary

New Construction - Lighting Power Density		
Measure	Unit	Incentive
Interior Lighting Power Density, 5% Better than IECC 2018	kW	\$250.00
Exterior Lighting Dusk to Dawn Operation 5% Better than IECC 2018	kW	\$215.00
Exterior Lighting 24/7 Operation 5% Better than IECC 2018	kW	\$435.00

New Construction - Performance Based / Whole Building	
Approach	Annual Energy Savings (kWh)
Performance Based - 5% Better Than IECC 2018	\$0.05 per kWh
Whole Building - 5% Better Than IECC 2018	\$0.05 per kWh

New Construction - Cooling / Misc.			
Measure	Unit	IECC 2018 Incentive	IECC 2018 - C406 Incentive
Air-Cooled Units:			
(<65 kBtuh), Qual SEER	Ton	\$12.00	\$14.00
(<65 kBtuh), 1 Additional SEER	Ton	\$8.00	\$10.00
(≥65 & <135 kBtuh), Qual EER	Ton	\$12.00	\$14.00
(≥65 & <135 kBtuh), 1 Additional EER	Ton	\$10.00	\$12.00
(≥135 & <240 kBtuh), Qual EER	Ton	\$18.00	\$22.00
(≥135 & <240 kBtuh), 1 Additional EER	Ton	\$10.00	\$12.00
(≥240 kBtuh), Qual IEER	Ton	\$18.00	\$22.00
(≥240 kBtuh), 1 Additional IEER	Ton	\$10.00	\$12.00
Water-Cooled Units, Qual EER	Ton	\$25.00	\$30.00
Water-Cooled Units, 1 Additional EER	Ton	\$10.00	\$12.00
PTAC/PTHP, Qual EER	Ton	\$60.00	\$60.00
PTAC/PTHP, 1 Additional EER	Ton	\$24.00	\$24.00
VSD on HVAC Fans and Pumps	per HP	\$60.00	N/A
VSD Air Compressor ≤50hp	per HP	\$45.00	N/A

¹Incentives for projects subject to Section C406 of IECC 2018

New Construction - Commercial Kitchen		
Measure	Unit	Incentive
HE Fryer	Vat	\$200.00
Large Vat Fryer	Vat	\$200.00
HE Griddle	Griddle	\$300.00
Convection Oven	Oven	\$350.00
Combination "Oven	Oven	\$1,000.00
Steam Cooker	Steamer	\$750.00
HE Holding Cabinets, Full Size	Cabinet	\$300.00
HE Holding Cabinets, 3/4 Size	Cabinet	\$250.00
HE Holding Cabinets, 1/2 Size	Cabinet	\$200.00
Ventilation Control - New Hood	HP	\$300.00
Evaporator Fan Controller	Controller	\$35.00
Ice Machine ES/CEE I <300	Machine	\$50.00
Ice Machine ES/CEE I 300-500	Machine	\$75.00
Ice Machine ES/CEE I 500-1000	Machine	\$125.00
Ice Machine ES/CEE I 1000-1500	Machine	\$200.00
Ice Machine ES/CEE I >1500	Machine	\$250.00
Ice Machine ES/CEE II <300	Machine	\$100.00
Ice Machine ES/CEE II 300-500	Machine	\$150.00
Ice Machine ES/CEE II 500-1000	Machine	\$250.00
Ice Machine ES/CEE II 1000-1500	Machine	\$400.00
Ice Machine ES/CEE II >1500	Machine	\$500.00
Refrigerator SD ES < 15 cf	Refrigerator	\$50.00
Refrigerator SD ES 15 ≤ V < 30 cf	Refrigerator	\$75.00
Refrigerator SD ES 30 ≤ V < 50 cf	Refrigerator	\$90.00
Refrigerator SD ES ≥ 50 cf	Refrigerator	\$125.00
Freezer SD ES < 15 cf	Freezer	\$60.00
Freezer SD ES 15 ≤ V < 30 cf	Freezer	\$75.00
Freezer SD ES 30 ≤ V < 50 cf	Freezer	\$80.00
Freezer SD ES ≥ 50 cf	Freezer	\$200.00
Refrigerator GD ES < 15 cf	Refrigerator	\$50.00
Refrigerator GD ES 15 ≤ V < 30 cf	Refrigerator	\$75.00
Refrigerator GD ES 30 ≤ V < 50 cf	Refrigerator	\$90.00
Refrigerator GD ES ≥ 50 cf	Refrigerator	\$125.00
Freezer GD ES < 15 cf	Freezer	\$60.00
Freezer GD ES 15 ≤ V < 30 cf	Freezer	\$75.00
Freezer GD ES 30 ≤ V < 50 cf	Freezer	\$80.00
Freezer GD ES ≥ 50 cf	Freezer	\$200.00

More Ways to Save

Please refer to 2023 Business Energy Services New Construction Specifications document for complete specifications

LEARN MORE

CALL | 800.342.6335
 EMAIL | bes@nvenergy.com
 WEB | www.nvenergy.com/bes



Project Example – New Construction

Retail Prescriptive

- Reviewed spec sheets for roof top units, lighting and kitchen equipment
- Required post site inspection.
- Confirm model number of qualified equipment.
- Ensured all lighting fixtures are installed per the as-built floor plan
- Required Post Photos of qualified measures
- **Total Incentive: \$2,258.10**
- kWh saved: 38,163 kWh

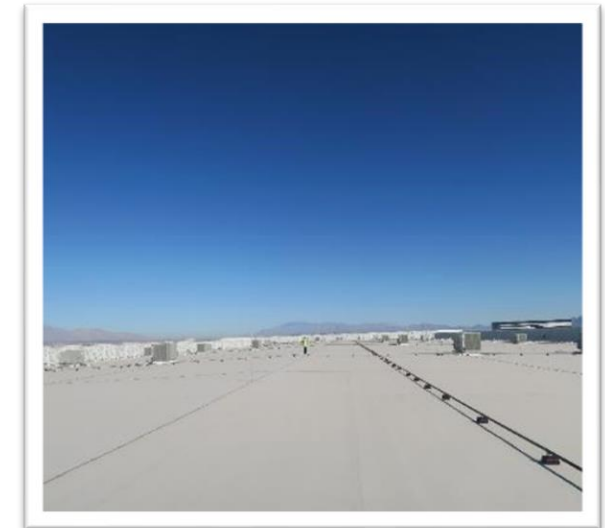
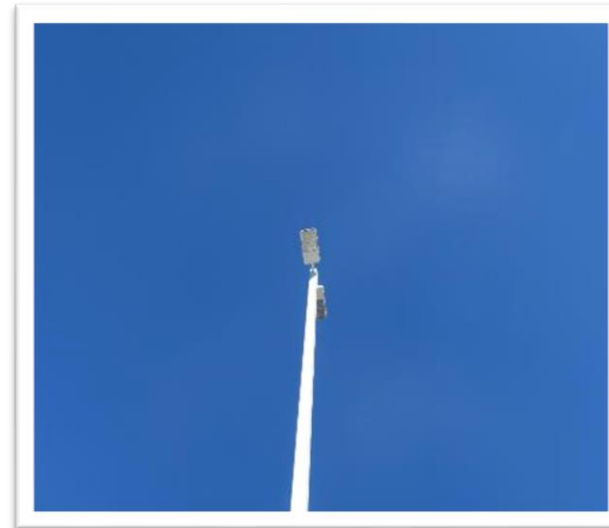
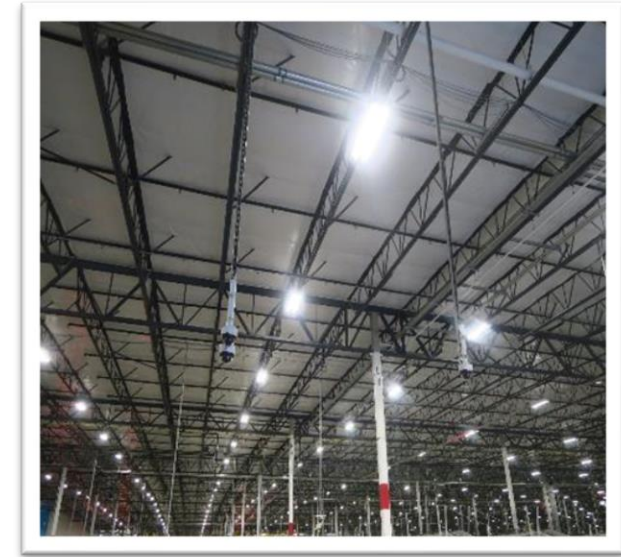
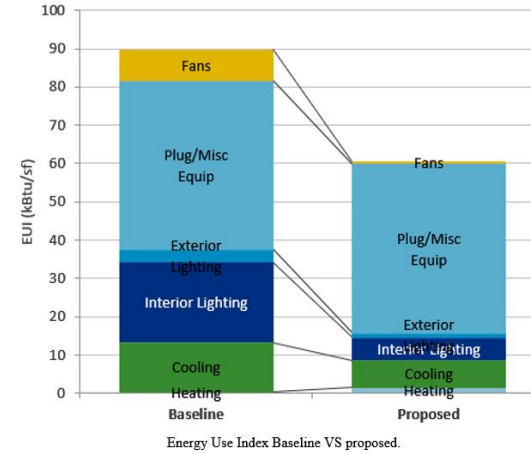
Final Inspection



Project Example – New Construction

Warehouse Whole Building Performance Model

- Full set of drawings (Architectural, Mechanical, Electrical and plumbing) submitted
- Energy modeling files for baseline and proposed are required.
 - We only accept eQuest and Energy Plus simulation programs.
- Submittals and spec sheets for all electrical and mechanical equipment provided and reviewed
- Post Inspection mandatory
- Check the installation of all lighting fixtures, HVAC and commercial kitchen equipment at site.
- Annual Energy Saving: 5,498,748 kWh/ year
- Total Incentive amount before tiering: \$276,833
- **Total Incentive: \$188,416**





We look forward to working with you

Talk with an Energy Advisor

1-800-342-6335

Email bes@nvenergy.com